



NAKSKOV FJORD

Nakskov Fjord is known for being the Danish fjord with the most islands. The wide, open spaces and the special light over the fjord offer unique experiences in its natural surroundings.

Your bike ride around Nakskov Fjord will provide many opportunities to experience its natural beauty. The route follows regional cycle route 38, the Baltic Sea Route, as well as national cycle route 8.

1. From the starting point at the ferry terminal Tårs, it is only a short distance from where the road bears left towards the small village of Sandby.

2. In Sandby, the route bends to the right and heads south to Lindelse, an old fishing village set in an idyllic location overlooking the fjord, surrounded by the forests of Lindelse and Hellenæs. Hellenæs Forest is particularly suitable for a relaxing picnic.

3. From Lindelse, the route heads towards Nakskov via Hellenæsstien.

4. Turn left off the path by Helgenæsvej. If you fancy a dip, it's a good idea to pop over to Hestehovedet, where you'll find a lovely beach and marina. By Hestehovedet you'll also find the little island of Kuddeholm, which you can access via a small bridge.

5. Nakskov is an old market town where you'll find the Indrefjord. The Indrefjord is rich in natural beauty, known for its bird life and large perch.

From here, the route continues along the coast, with wonderful views of Nakskov Fjord and the many small islands.

The island of Enehøje covers almost 100 hectares and offers fabulous views of Nakskov Fjord and the Langeland Belt, at an unusually high altitude by Lolland's standards. Vejlø is only about 36 hectares big, but up until recently it was the source of livelihood for a family living there. On Slotø you'll find Englesborg, the remains of a fortification constructed by King Hans around 1508. Before then, the island was known as Æbelø. The island of Rommerholm covers just 4 hectares.

The southern part of the fjord is characterised by dykes. Stubbeland, Mellemland, Færgeland, Stensø, Store and Lille Vejlø, Bondeholm, Bogø, Ydø and Langø are names that today can be found on a map, but previously these ten islands lay in the southern part of Nakskov Fjord.

The route ends at the Albuen ("Elbow"), where you can sail back to Nakskov on the Postbåden (the mailboat).

Nakskov Fjord is a Natura 2000 site, which serves to safeguard the area's value as part of an international ecological network of protected natural areas.



HESTEHOVED BEACH



LANGØ CHURCH



LINDELSE



NAKSKOV FJORD / THE DIKE



POSTBÅDEN



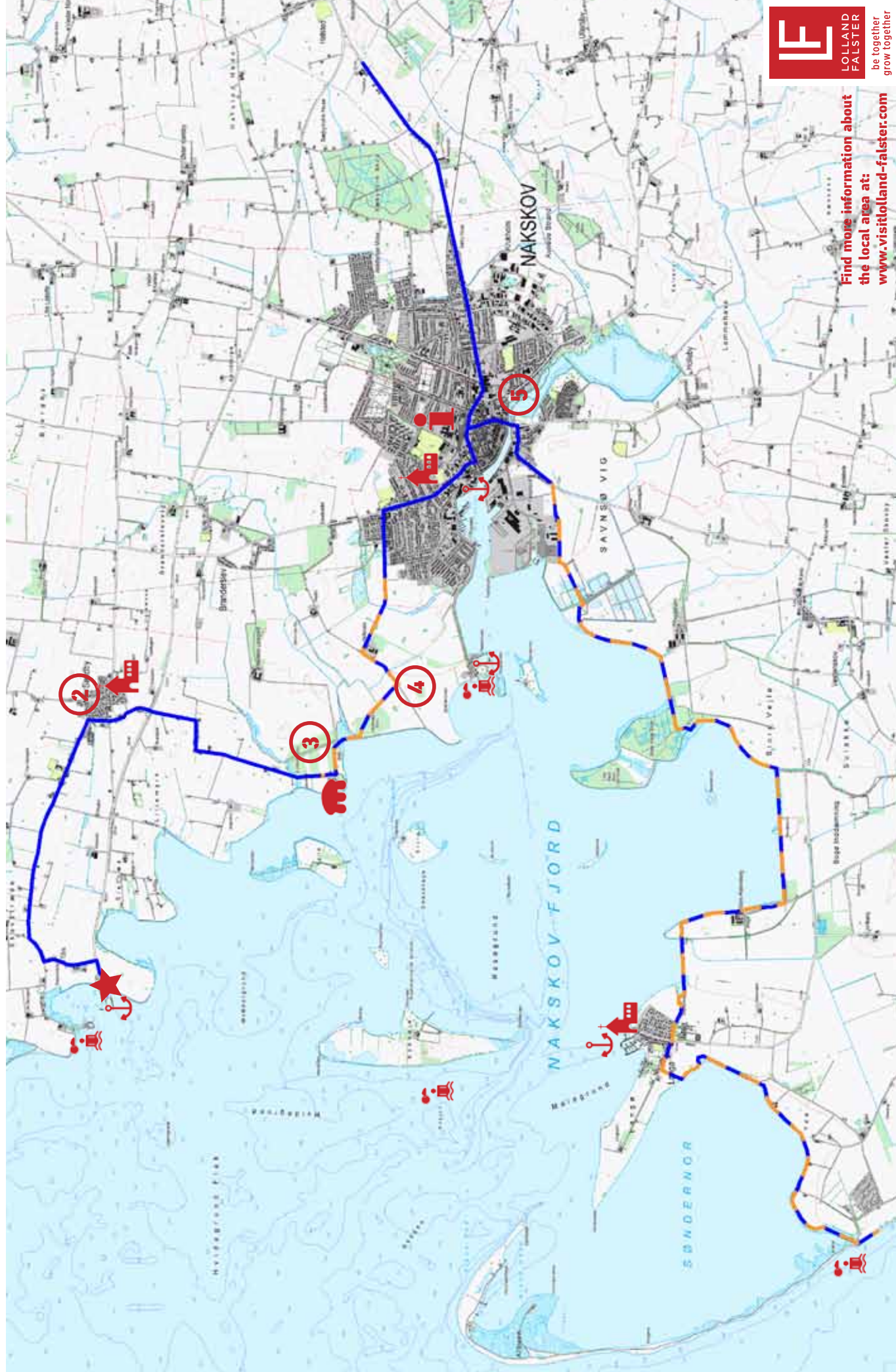
Your guide to outdoor adventures

Scan the code or get the app' in App Store or Google Play

Find more information about the local area at:
www.visitlolland-falster.com

NAKSKOV FJORD 40 km

- ★ START
- Gravel Road
- Memorial/Ruin
- Church/Abbey
- Harbour
- Beach
- Tourist-Information



Find more information about the local area at: www.visitlolland-falster.com