

Alsstien

Marked with signs

The Als route is clearly marked with signs making it easy to follow the route for its entire length. If you want to do a circular tour of Nordals, the map also offers alternative route suggestions. These alternative routes are not marked, but rather they follow gravel roads and beaches for easy walking.

3 other marked routes are also shown, which can be combined with a circular tour or alone as a day trip.

Basic Camping pitches

Drinkingwater and toilets are not provided at the basic camping pitches and shelters. So remember to bring your own water for drinking and meals.

Camp

Lillebælt Camping
Lillebæltvej 4, Fynshav
6440 Augustenborg
Tlf. +45 7447 4840

Naldmose Camping
Naldmose 12, Fynshav
6440 Augustenborg
Tlf. +45 74474249

Lavensby Strand Camping
Arnbjergvej 49, Lavensby
6430 Nordborg
Tlf. +45 7445 1914

Købingsmark Strand Camping
Købingsmarkvej 53
6430 Nordborg
Tlf. +45 7445 1870

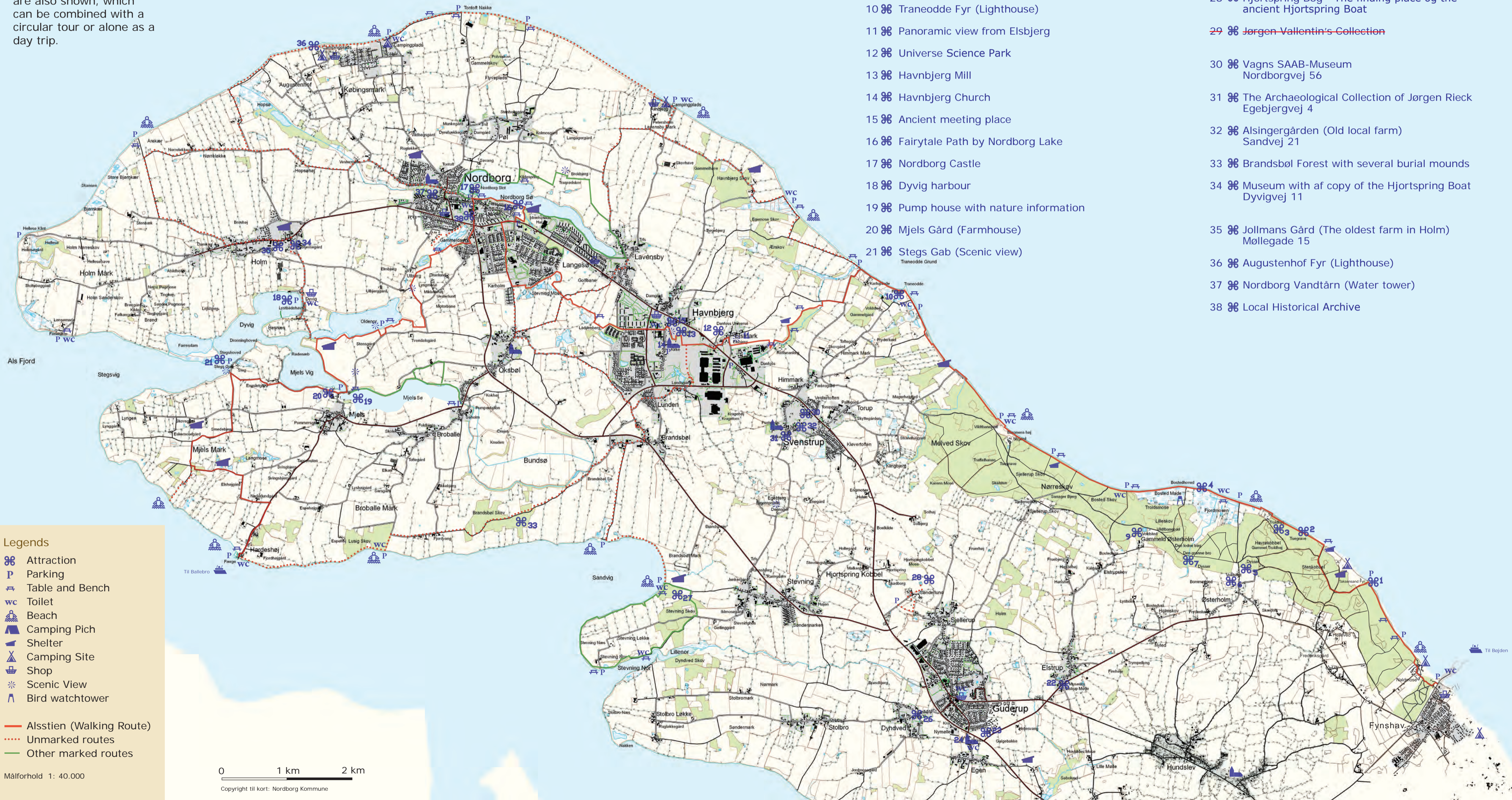
Augustenhof Campingplads
Augustenhofvej 30
6430 Nordborg
Tlf. +45 7445 0304

Attractions along the route

- 1 ☞ Taksensand Fyr (Lighthouse)
- 2 ☞ Hillock graves
- 3 ☞ Troldhøj (Scout Center)
- 4 ☞ Natural beach ridges
- 5 ☞ Long barrows
- 6 ☞ Østerholm Castle Ruin
- 7 ☞ The green Bridge (Old stone bridge)
- 8 ☞ ~~Den lodne bog (A deform Beech tree)~~
- 9 ☞ Helved Voldsted
- 10 ☞ Traneodde Fyr (Lighthouse)
- 11 ☞ Panoramic view from Elsbjerg
- 12 ☞ Universe Science Park
- 13 ☞ Havnbjerg Mill
- 14 ☞ Havnbjerg Church
- 15 ☞ Ancient meeting place
- 16 ☞ Fairytale Path by Nordborg Lake
- 17 ☞ Nordborg Castle
- 18 ☞ Dyvig harbour
- 19 ☞ Pump house with nature information
- 20 ☞ Mjels Gård (Farmhouse)
- 21 ☞ Stegs Gab (Scenic view)

Other attractions in the area

- 22 ☞ Elstrup Mill (Dutch gallery)
Fynshavvej 12
- 23 ☞ Northern Europe's highest sundial
- 24 ☞ Egen Church
- 24 ☞ Protected Church stables
- 25 ☞ ~~Agricultural Museum~~
- 26 ☞ The home of Kjærbølling
The founder of the Copenhagen Zoo
- 27 ☞ Stævningsskov
- 28 ☞ Hjortspring Bog - The finding place og the ancient Hjortspring Boat
- 29 ☞ ~~Jørgen Vallentin's Collection~~
- 30 ☞ Vagns SAAB-Museum
Nordborgvej 56
- 31 ☞ The Archaeological Collection of Jørgen Rieck
Egebjergvej 4
- 32 ☞ Alsingergården (Old local farm)
Sandvej 21
- 33 ☞ Brandsbøl Forest with several burial mounds
- 34 ☞ Museum with af copy of the Hjortspring Boat
Dyvigvej 11
- 35 ☞ Jollmans Gård (The oldest farm in Holm)
Møllegade 15
- 36 ☞ Augustenhof Fyr (Lighthouse)
- 37 ☞ Nordborg Vandtårn (Water tower)
- 38 ☞ Local Historical Archive



Legends

- ☞ Attraction
- P Parking
- ☞ Table and Bench
- wc Toilet
- ☞ Beach
- ☞ Camping Pich
- ☞ Shelter
- ☞ Camping Site
- ☞ Shop
- ☞ Scenic View
- ☞ Bird watchtower
- Alsstien (Walking Route)
- ... Unmarked routes
- Other marked routes

0 1 km 2 km

Målforhold 1: 40.000

Copyright til kort: Nordborg Kommune

Welcome til Alsstien (Walking Route)

This walking route leads you through 38 km of some of the most beautiful nature areas on Nordals. It begins at the Lillebælt (Little Belt) and continues through one of Denmark's longest coastal forests, Nørreskov Forest, where the beech trees hang majestically over the sands of the beach below. But the forest is comprised of much more than just trees. The trail goes along beach ridges, marshlands, through forest clearings and also features a great many ancient cultural relics. Hiking along narrow paths and winding country roads offers breathtaking views, and the recreated lakes, Oldenor and Mjels Sø (Mjels Lake), bring you close to a varied bird life. Here you will see large flocks of grey geese, cormorants drying their wings in the ghostly dead trees, and the nests of the grebe floating on the surface of the water. This leg of the route concludes at Hardeshøj, where the little ferry, Bitten, invites you to take an idyllic trip across Als Fjord to Jutland.

Along the coast

The route takes you into the forest soon after leaving the car park west of the ferry berth. The first clearing is quickly reached where the path continues through the camping grounds.

The beauty of Nørreskov Forest is immediately apparent. The path takes you along a low coastal cliff sheltered by the large old beech trees that form huge umbrellas over the beach. Winter storm erosion can be seen clearly on the cliff, one of the consequences of which is illustrated by the large number of gigantic beech tree trunks strewn about the beach.



Merganser bird houses

Along the coast at regular intervals you will see large bird houses hanging in the beech trees. These are home to the large merganser birds of the area. This bird prefers to breed in hollow trees, of which there are not too many in Danish forests. The bird houses are intended to encourage the birds to nest along South Jutland's east coast. The merganser can nest here in safety from most predators, while their young must go down to the coast in order to seek sustenance. Newly hatched mergansers throw themselves over the edge and down towards the ground, where they follow their mother to the water's edge.

The boxes are also enjoyed by the tawny owl which often uses them to shelter their young.

Natural forest

Nørreskov Forest covers 700 hectares and stretches for nearly 9 km along the Little Belt. This makes it one of Denmark's longest coastal forests. Part of the forest (45 hectares) is preserved as natural forest, which means that nature is allowed to grow and develop unhindered. Fallen trunks are permitted to rot where they fall, much to the appreciation of local insects and birds. This is also for the benefit of people who choose to walk in the forest, because it helps keep the forest varied and therefore more interesting.



Picnic areas

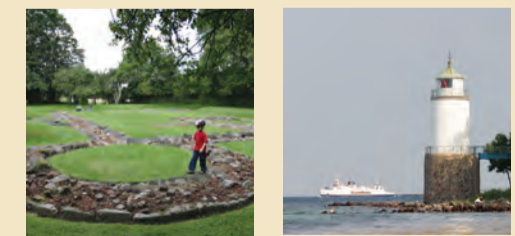
Along the coastal path you will find a number of interesting clearings where the vegetation is mossy and unique. This occurs because the clearings are exposed to a great deal of wind from the sea and dead leaves and other nutrients are swept away, so only the hardiest of plants can survive here.

This type of clearing makes an excellent picnic area, and in several of the clearings you will find tables and benches where you can rest and enjoy the view over the Little Belt. Shelters are also available for one or two overnight stays. There are also areas where the shelters where you can light a bonfire and prepare your a meal.

Buildings and ancient monuments

The 19 meter-high Taksensand Fyr (Lighthouse) was built in 1923. It boasts a beautiful and idyllic location on the edge of the forest. Many cresset stones have been found in the forest. The stones feature small indentations (cressets) that are thought to have had religious meaning.

In the forest you will find several burial mounds. The oldest long barrow is 5500 years old. Some of them were used several times, such as in Troldhøj, where flint axes from the Stone Age and urns from the Bronze Age have been found. Out by the coast are some hill-ock graves, some of which can be difficult to see due to their low one-meter height scattered about on the forest floor. These hillock graves, approximately 40 of them, are from the Iron Age and the time of the Vikings and are known as the Swedish graves because of the legend that 40 Swedish pirates are



buried here. The chieftain is said to be buried under the large monolith, Bjørnstenen, which stands out at the coastline.

While in Nørreskov Forest, it is possible to take a detour to the Østerholm Castle ruins, which once belonged to the powerful Als noble family of Sture.

Emil Nolde

The famous artist Emil Nolde lived in Nørreskov Forest for several years after 1903. He had a small studio near the coast and some believe that his art became lighter and more colour-intensive during the years he spent working and living there. One look at Nørreskov Forest in its autumnal glory against the deep blue sea and you will be left in no doubt as to where he got his inspiration. Today his paintings can be seen at the Nolde Museum in Seebüll just south of the Danish-German border.



Fjordmosen

Right after Troldhøj is the forest's largest clearing, Fjordmosen. Note the abrupt change from the deep beech forest to the open, rugged marsh. This difference makes for varied nature that adds interest and excitement to the walk, and also provides a good environment for a wide range of plant and animal life.

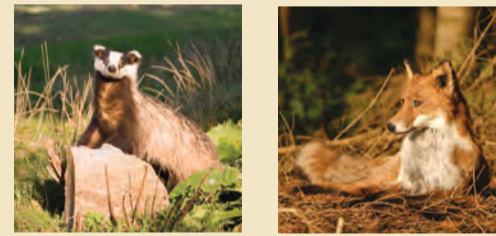
Along the marsh, the path takes you along natural beach ridges formed by pebbles pushed further inland each year by autumn storms. In many places the tops of the old fence posts can be seen poking up amid the beach ridges. These reveal



the story of where the field borders were located until just a few years ago.

Within the beach ridges you will find Fjordmosen, where there are many possibilities to see animals such as deer, foxes, badgers, and a wide range of birds. As usual, the chance of seeing animals is increased if you come in the morning. Here you can also experience very unique beach and meadow flora such as thrift, meadow saxifrage, seakale, sea holly, and St. John's wort.

The area provides picnic tables and a public washroom.



Badger

Fox

Nordborg and the castle

The town developed as a trading place around the castle. Legend has it that "Alsborg" was established around 1150 by Svend Grethe. At that time the castle was located deep within a fiord, which is now closed off as Nordborg Lake. Since then the castle had belonged to certain dukes of Southern Jutland, but was conquered by Valdemar IV and Eric of Pomerania. In 1490 the castle came under the control of the Danish royal family and was later given to Duke Hans the Younger, who was also given Sønderborg and Sundeved.

Through the years, the castle has served as a prison that housed such prominent prisoners as Bishop Valdemar and Erik Klipping. The castle, which of course has its own ghost, the 'grey lady', is now home to a residential school. The public is admitted to the castle from sunrise to sunset.



Oldenor path

Oldenor is a lake which was once drained and cultivated. In 1993 it once again was filled with water and it is now a true paradise for birds of all kinds. From the vantage point to the right of the parking lot you may see grey lag geese, cormorants, pochards and tufted ducks. During winter, interesting birds such as large mergansers, golden eyes, whooper swans and huge flocks of widgeons can also sometimes be viewed.



E Govl

The path over the hill and along Mjels Vig is known as E Govl. The top offers a wonderful view across Als Fjord all the way to Aabenraa Fjord. The tall chimney stack in the background belongs to the Enstedværket power station in Aabenraa. Along the slope down to Mjels Vig is a beautiful old thicket where chiffchaffs and warblers sing constantly during breeding time. Many of the tree trunks are overgrown with ivy, which gives the thicket an old and almost rain forest-like appearance. Between the trunks can be seen Mjelsvig, with its idyllic boat harbour.



Traneodde Fyr (Lighthouse)

The area around the lighthouse offers tables and benches suitable for picnicking. Beyond the lighthouse there is shallow water which stretches out for quite a long way, and since this is a good place to fish, there are often a few anglers to be seen. This is an excellent spot to sit and enjoy the peace and quiet while observing the bird life along the water, such as the thousands of eider. During summer the males collect in large flocks while the females brood in their nests. During winter you will find numerous migratory birds that spend the winter in the Little Belt. You may also see a merganser with her young, some of which will likely be sitting on their mother's back for transportation.

Newly planted forest

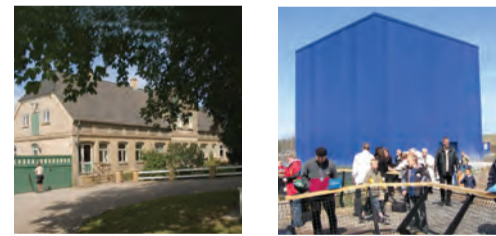
After the lighthouse, the route turns in towards land. Here you will pass a newly planted forest where song thrushes try to outsize one another during breeding times. The various sites have been named and you can read them on signs posted along the way. One site is called "Æ Nyku". This is from the Als dialect and means "new forest on the hillside". In "El Skov" (Love Forest) you will find a romantic little lake that is home to geese and deer. In "Bittenlund" the benches are so numerous that you can always see the next one. This area offers ample opportunity to put your feet up and enjoy the tranquility.



Scenic outlook and the old factory

From the top of the hill there is a scenic outlook to Mads Clausen's home. This is where he started Danfoss, in an old hen house with offices in the attic. In Clausen's boyhood home you can learn the story of Danfoss, and up in the attic Mads Clausen's old office has been maintained just as it was in the old days.

Next door is the adventure park Universe with the large blue cube, where you can learn and play with technology for an entirely unique experience. Across from Mads Clausen's house there is a monument to commemorate the reunion of North Slesvig with Denmark in 1920.



Havnbjerg Kirke and Mølle (Havnbjerg Church and Mill)

The church is located high up on a hill and the view of it is beautiful from all sides. The altarpiece was painted by the well-known Golden Age artist Eckersberg, who was from Sundeved on the other side of Als Fjord. The mill is from 1835 and for many years it was covered in tin plate, but it once again has a straw roof just as it originally did – interesting, magnificent and unusual. The mill is now a museum. From Møllebakken there is a beautiful view to the Little Belt, and down the hill the vicarage is located close to an ancient meeting place.



Mjels

At the foot of the hill lies Mjels with its atmospheric harbour. To the left is Mjels Lake which, like Oldenor Lake, was once drained but is now recreated as a full-fledged lake again in 2006. The interesting and very picturesque pump house with its canal and lock system can still be found here. This is a good place to enjoy a cup of coffee at one of the picnic tables.

Mjelsgård, with its red bricks, has a very old foundation which can be dated all the way back to the Middle Ages.

South of the cove is Røde Næb with its fairytale pollarded trees bordering the side of the road.

Stegs Gab

The incredibly beautiful passage at Stegs Vig (Stegs Cove) is called "Stegs Gaf" in the local Als dialect. It features incredibly beautiful nature and is the perfect place for a rest with a view of the water. During summertime the boats sail close by on their way to the harbours in Dyvig or Mjelsvig.



Beach toad

Green tree frog

Sunken roads, beaches and meadows

You might find it difficult to leave the beautiful approach to Dyvig, but even more wonderful nature awaits you on this route. If you are hiking on a warm evening in May you might hear the cheery choir of rare green tree frogs singing loudly from the ponds along the side of the road.

Here the route takes you down a genuine Als sunken road, and near Lyngø a path leads down to Als Fjord, with a sandy beach suitable for swimming. If you see a little mouse hopping along the beach look closely because it could very well be a toad. This is the home of the beach toad, and it is not as slow or sedate as other kinds of toads.

Hardeshøj

Feel the calm and tranquility wash over you in this idyllic little harbour and enjoy the impressions gleaned from a picturesque hike. From Hardeshøj you can take a small ferry across Als Fjord to Ballebro. The old ferry inn dates from 1721.

Experience Nordals WALKING ROUTE ALSSTIEN



Nature walks

The marked walking trails and public areas are open to foot traffic and use at one's own risk. If you have a sturdy bicycle it is possible to cycle for most of the route, but always remember to show consideration for pedestrians along the route.

Since much of the route is on private property, please behave accordingly and show consideration. Keep dogs on the leash and put refuse in the designated bags provided.

Leave only footprints behind. Enjoy your walk!



Alsstien (the Als route)

Alsstien (the Als route) is on the island of Als, and leads you through some of the most beautiful nature areas to be found on the island. The route begins in Fynshav and follows the east coastal line up over Nordborg and further in across the island to Hardeshøj on the island's west coast, where you will find a ferry connection to Jutland.

An extension of the Als route has been planned for 2008, in which the route will be extended south to create an unbroken connection to Kegnæs on South Als. When completed, the route will be approx. 63 km long.

Along the Als route you will find basic camping pitches and shelters for overnight stays. The number of pitches will be continuously increased. If you are planning a trip lasting several days, contact the Tourist Office for more information on new camping pitches and shelters.

Information

This brochure is published by the Municipality of Nordborg with funding from the Lottery Pot of the Danish Outdoor Council as well as from EU Article 33. Since the publishing the number of shelters has increased.

For more information on the area please contact:

Sønderborg Turistbureau
Perlegade 50
6400 Sønderborg
Tlf. +45 7442 3555
info@visitsonderborg.com
www.visitsonderborg.com